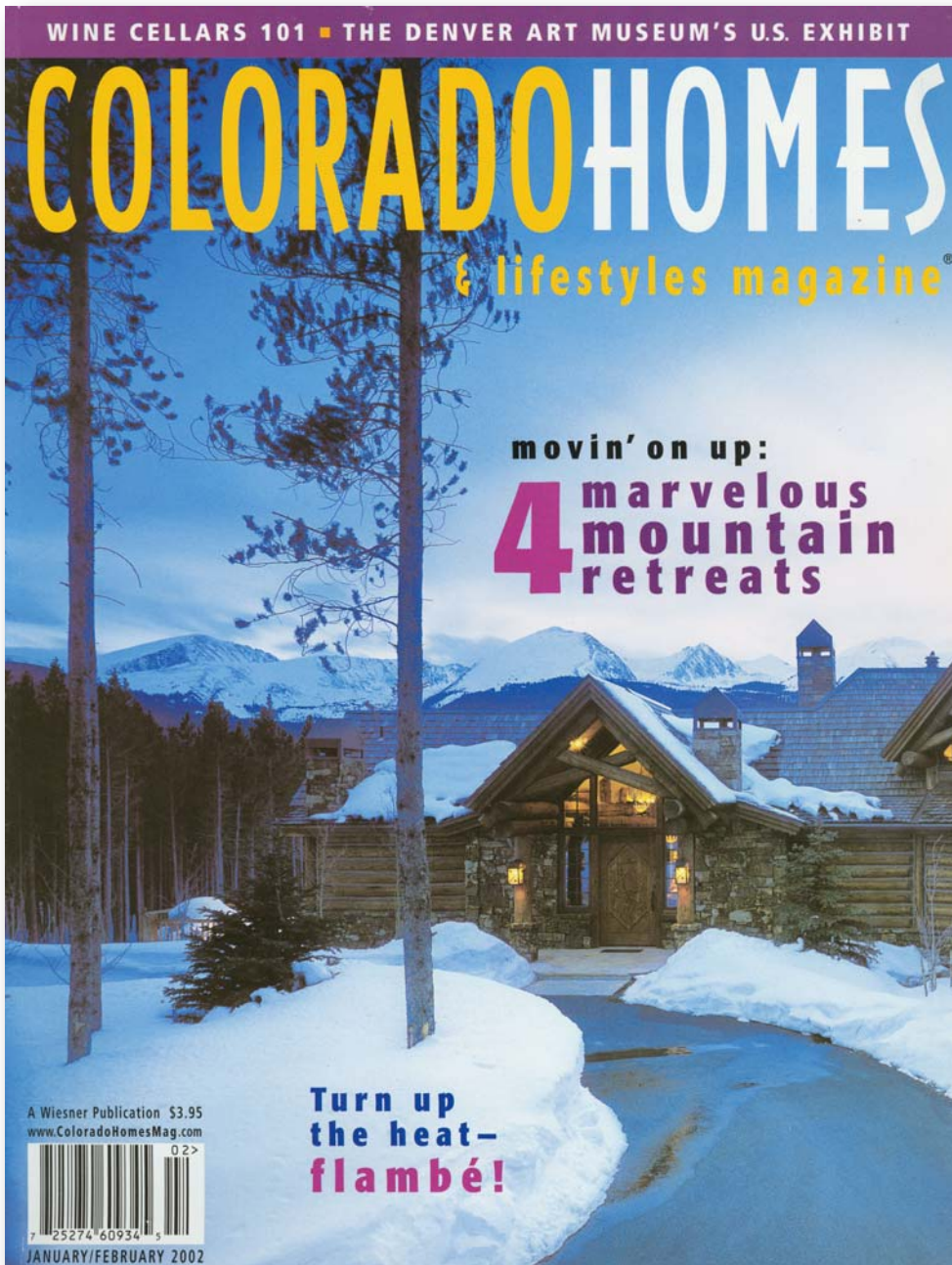


The Schuette Residence

featured in:



Rocky Retreat

The grandeur of the mountains beckoned this retired Ohio pair



John and Theresa Schuette, both avid cross-country skiers, wanted to design a home that would take advantage of the gorgeous Rocky Mountains as well as fit their lifestyle... To do that, they enlisted the help of Breckenridge architect Jon Gunson.





Large 20-foot log structural beams run the length of the house, and the high ceilings give the rooms an open, airy feel. The stunning entryway is lined with distressed pine planks, and Colorado buff sandstone stairs lead into the great room...



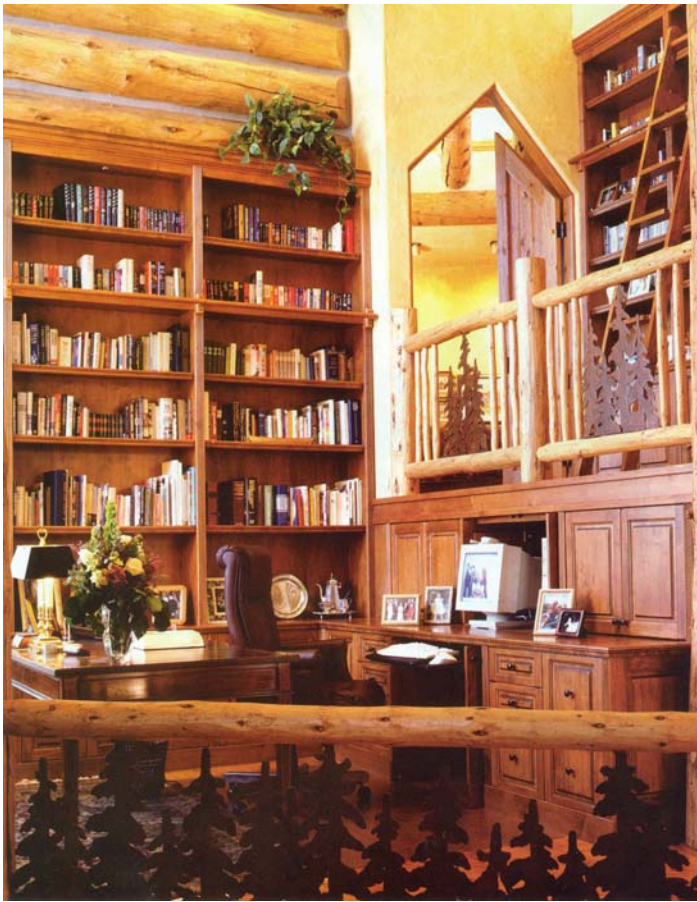
One of the biggest challenges in designing the 6,000-square-foot home was to take advantage of the beautiful views of the 10-Mile Range.

"Jon accomplished that goal," says John. "We have a view of the mountains from every room in the house, including the laundry room and my shop. He integrated it all together, and it still looks wonderful from the outside."

Handmade Italian summer wheat tiles and a stone-corbeled arch frame the cooking area.

... but the most unique feature is the master bath: a running waterfall.





Above the study, a custom-designed railing with snowload pine iron motifs leads to the master suite, where the peaks of all the doors match those of the windows throughout the house.

LEFT: Office equipment is hidden behind chestnut cabinets in the study/library.



Located on the lower level, the media room has a working bar and large nine-foot TV screen. The speakers are situated beneath the sofas to give a true-to-life sound experience.

It's no surprise that John's favorite area in the house is the media room. Here, the couple can enjoy movies on a nine-foot TV screen or entertain at the wet bar.

