

# The Gray Residence

featured in:



## Country Kitchen

**W**hen restaurateur Reggie Gray and wife Pam decided to build a hillside home on the edge of the historic district of Breckenridge, Colorado, they wanted a bright, workable kitchen where family and friends could mingle.

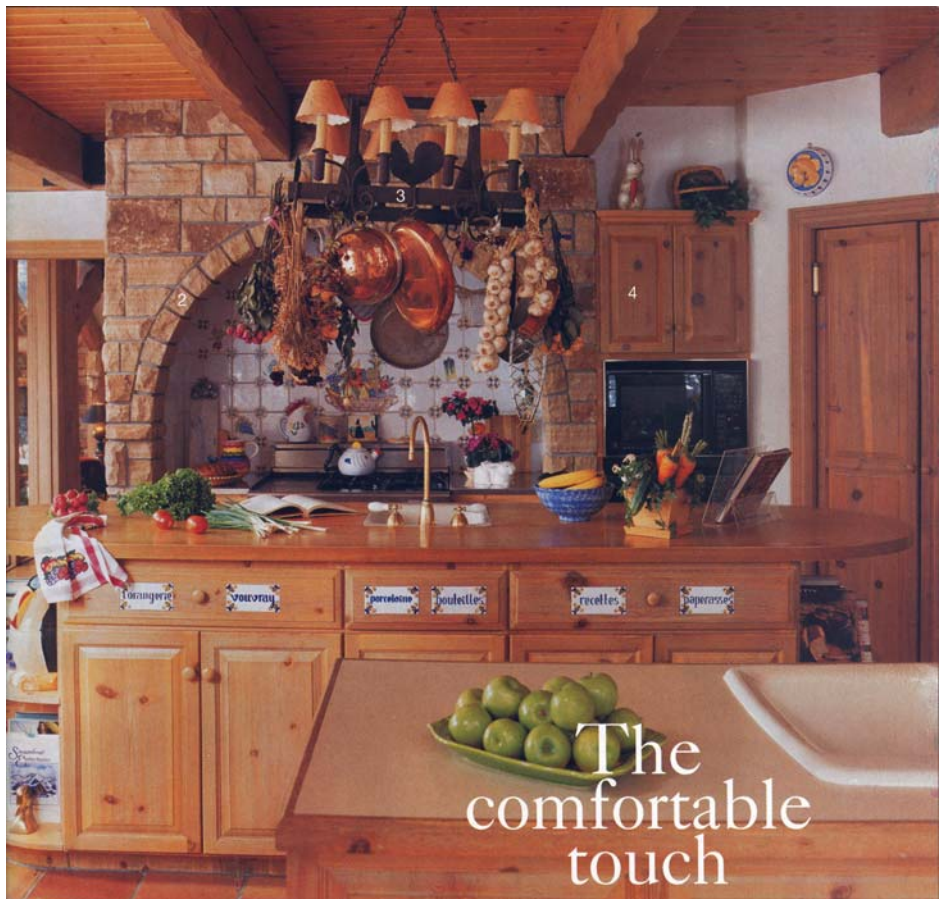
“Reggie is a gourmet chef, so we wanted a kitchen that would be up to his standards,” says architect Jon Gunson, of Custom Mountain Architects of Breckenridge, who helped the couple design their home. “We wanted to combine Reggie’s desire for a gourmet kitchen with Pam’s desire for a cozy and inviting place.”

■ 1. COLORFUL TILES with French cooking terms lining the island customize the kitchen and reflect the relaxed atmosphere of the room.

■ 2. A STONE ARCH over the range gives the room a warm focal point.

■ 3. THE HANDMADE clay-tile floor and functional hanging chandelier/pot rack reinforce the rustic charm of the space.

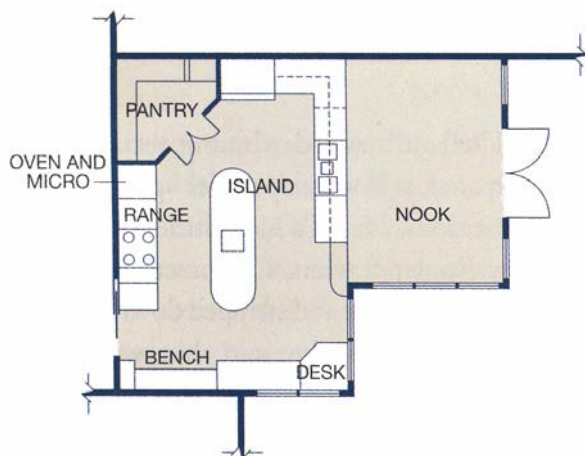
■ 4. WIRE-BRUSHED, whitewashed pine cabinets have a homey, aged look that feels just right in a country-themed kitchen.





The couple decided to create a kitchen with a French Country theme. At the center of everything is a center island with a maple counter, sink, pullout spice drawer, small-appliance storage and shelves for cookbooks and porcelain animals. Tiles with French cooking terms line the island and add charm.

Wire-brushed, whitewashed pine cabinets surround the kitchen and reflect the relaxed, country theme. A flagstone arch over the ranch gives the kitchen a focal point while the hanging pot rack/chandelier over the center island, the rustic handmade clay tile floor and some distressed Douglas fir beams on the ceiling add warmth and architectural interest. A built-in rattan sofa with pillows and cushions on one side of the kitchen gives friends a place to sit and watch the cook. "We did lots of features in this kitchen to make it friendly for both Reggie and Pam," adds Gunson.



## FLOOR PLAN

Serving as the center of the rectangular kitchen, the large, roomy maple-topped center island is functional as well as attractive. It provides extra storage and counter space.